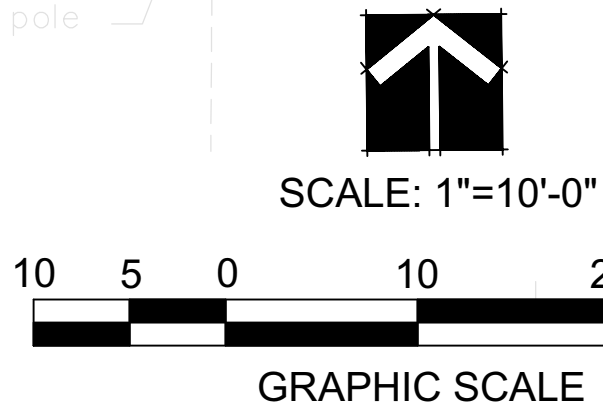
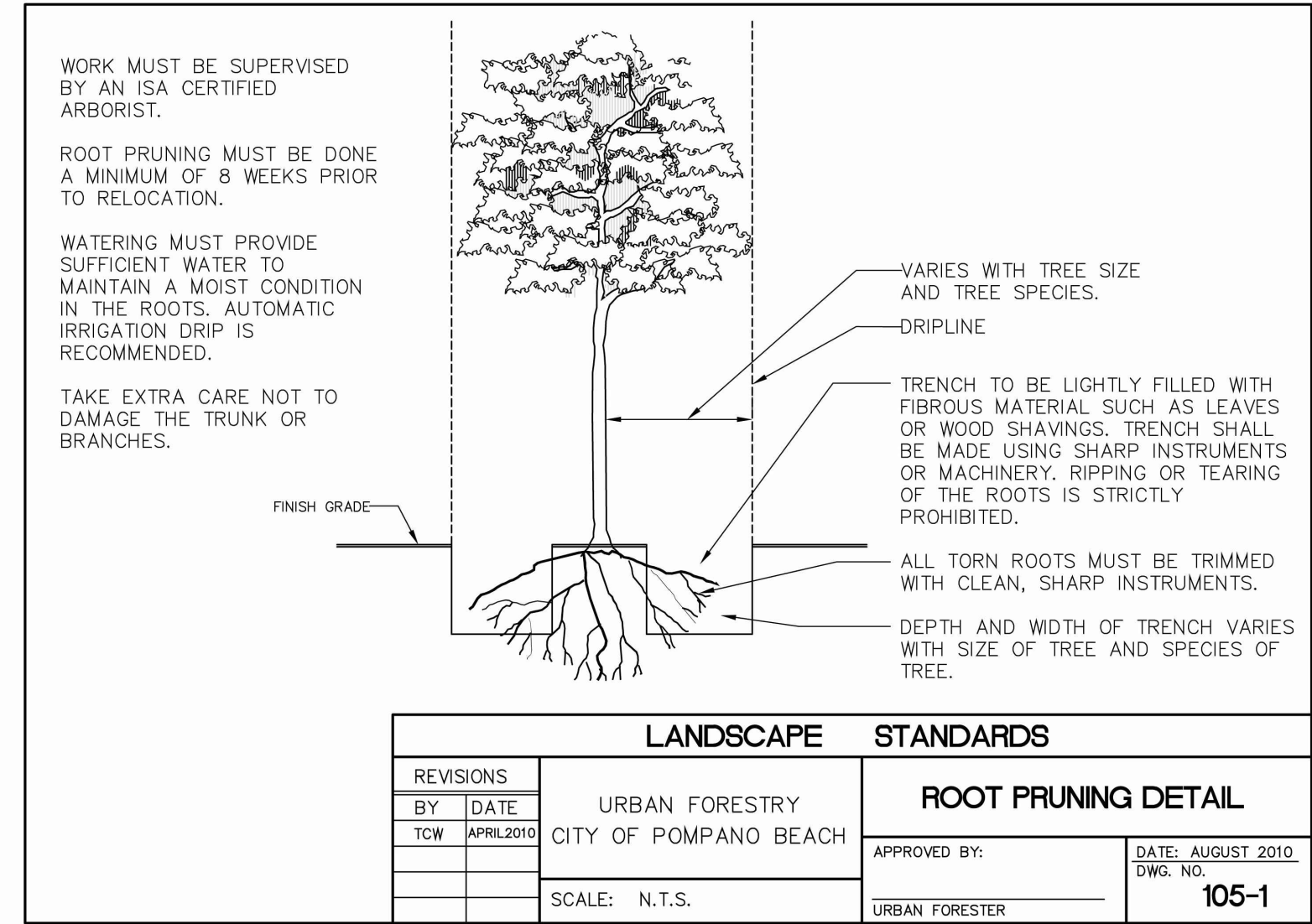
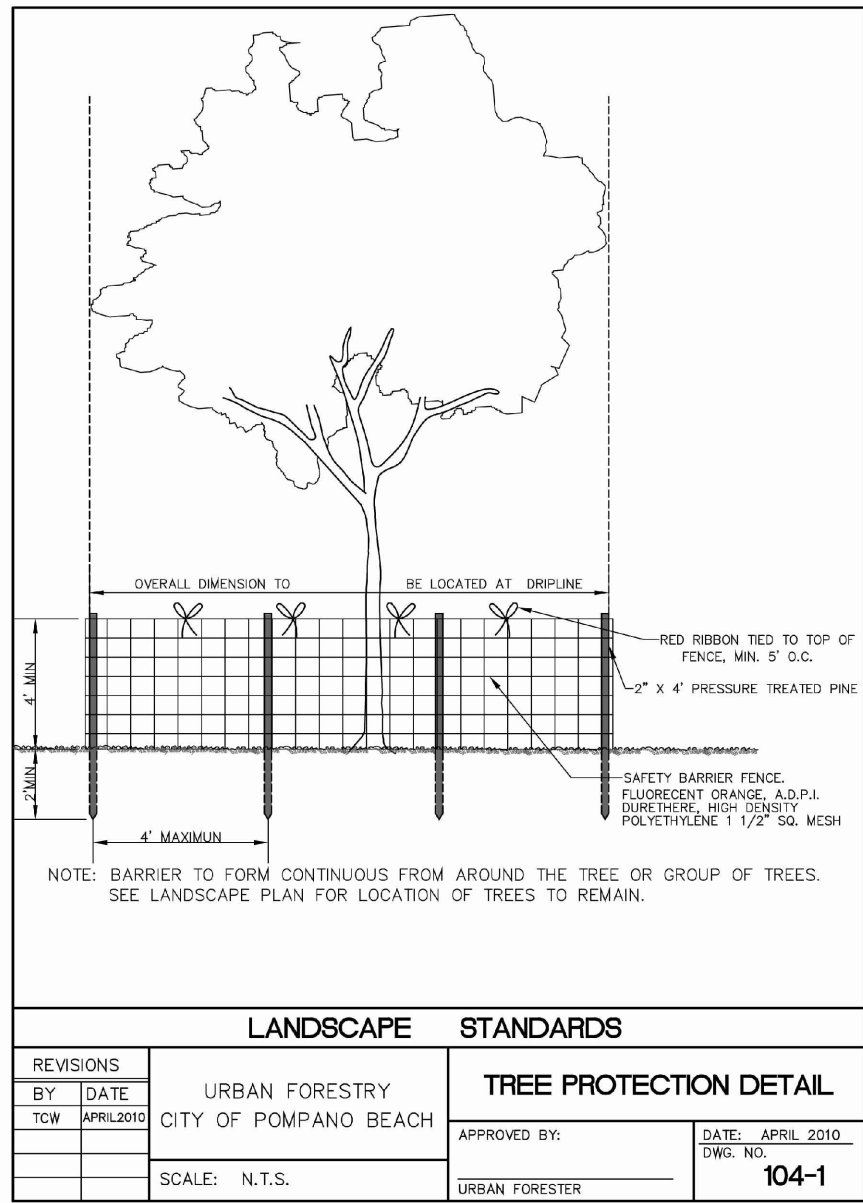


Existing Tree Survey									
KEY	BOTANICAL NAME	COMMON NAME	CALIPER	HEIGHT	CANOPY	CONDITION	DISPOSITION	VALUE	COMMENTS
			(INCHES)	(FEET)	(FEET)				
1	Bursera simaruba	Gumbo Limbo	7	13	12	70%	Relocate	\$1,562	Exotic
2	Adonidia merrillii	Christmas Palm	4	13	6	55%	Remove	\$114	
3	Adonidia merrillii	Christmas Palm	7 double	12	8	55%	Remove	\$114	
4	Euphorbia tirucalli	Pencil Cactus	9	12	9	30%	Remove		
5	Cocos nucifera	Coconut Palm	11	25	15	60%	Remove	\$242	
6	Sabal Palmetto	Sabal Palm	12	25	10	70%	Relocate	\$295	
7	Cocos nucifera	Coconut Palm	9	26	12	70%	Remove	\$242	
8	Sabal Palmetto	Sabal Palm	10	20	9	65%	Relocate	\$295	
9	Sabal Palmetto	Sabal Palm	10	20	9	65%	Remain	\$295	
10	Sabal Palmetto	Sabal Palm	12	22	9	65%	Remove	\$303	
11	Ficus aurea	Strangler Fig	36	25	20	35%	Remove	\$5,900	

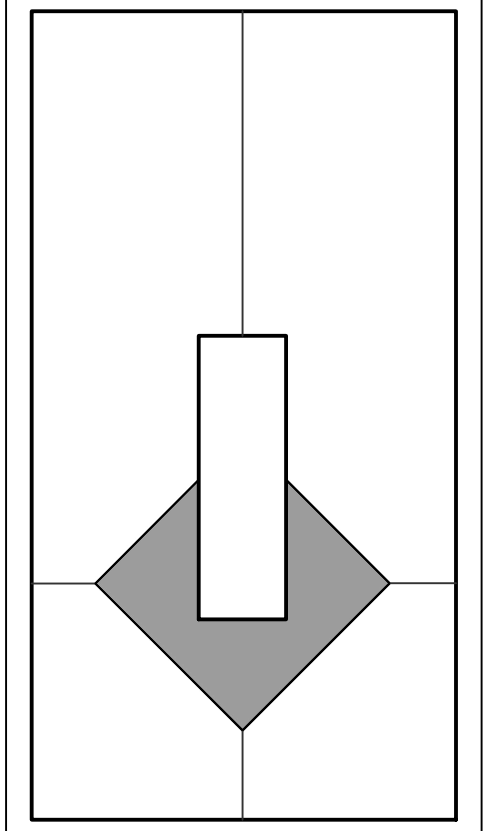
NOTE:
TREE RELOCATIONS TO BE COMPLETED ON ONE TIME RELOCATION. SEE LANDSCAPE PLAN FOR LOCATIONS.
CONTRACTOR TO FIELD COORDINATE RELOCATIONS AND PROTECT TREES AS REQUIRED DURING CONSTRUCTION.

ROOT PRUNING FOR TREE RELOCATION

- 1) ROOT PREPARATION
A. Trees to be root pruned with clean, sharp equipment 8-12 weeks prior to relocation to a depth of at least 24 inches by ISA certified arborist.
1. Maintain root pruned materials by watering, weeding, mowing, spraying, fertilizing, and other horticulture practices.
2. After root pruning, backfill with good rooting medium, fertilize with organic fertilizer to promote root growth.
3. Mulch to reduce weeds, discourage foot traffic, conserve moisture, and minimize temperature fluctuation.
B. Root Ball Size Chart: Root ball sizes shall be according to minimum standards set forth in Grades and Standards for Nursery Plants Part II, Palms and Trees, Florida Department of Agriculture.
1. Trees-Minimum Ball Sizes: DBH Minimum Ball Diameter
3-1/2" to 4": 28"
4" to 4-1/2": 30"
4-1/2" to 5": 32"
5" to 5-1/2": 34"
Larger sizes increase proportionally.
C. Two to three weeks after root pruning and before lifting, tree canopies shall be pruned to remove any dead, decayed, broken branches, low hanging branches, or branches which would otherwise restrict strapping/lifting activities.
- 1) TREE RELOCATION
A. Trees shall be lifted using fiber rope lifting straps, with their rootballs cradled with fiber rope tree slings or other appropriate materials, such that the bulk of the trees' weight rests upon the rootball. Trunk straps may be used for balancing a maneuvering the trees into position, but shall not be used to lift or hold 100% of the trees' weight.
1. Once lifting begins, any uncut roots which become apparent around or under the rootballs shall be immediately severed with the appropriate pruning tools so as to minimize tearing.
2. After lifting, trees shall not be set down again until reaching the final site of relocation.
B. Trees are to be set in pre-dug pits, and properly braced in accordance with tree planting details shown on landscape plan.
C. Daily irrigation at high volume (15-25 gallons per tree, as per size) shall be provided for the first month after relocation. After that time, irrigation shall be provided 3 times per week, continuing at high rates, for at least 2 more months. After establishment, standard irrigation practices shall be implemented.



DRC
PZ22-12000015
10/5/2022



Digitally signed by James B. Euell
Date: 2022.08.11 07:51:09 -04'00'

PROJECT NAME & LOCATION:
12TH STREET 5-UNIT TOWNHOMES
3232 NE 12TH STREET
POMPAHO BEACH, FLORIDA 33062

DISTRIBUTION:	DATE:
DRC COMM.	08-02-22

DRAWING NAME:
TREE DISPOSITION PLAN

DRAWING NUMBER:
TS-1